

FRIDAY, SEPTEMBER 13 2024

# THE PULSE OF RINI

RINI Community News

## At-a-Glance

**Chromebooks ONLY, Please:** Students are only allowed to use their Chromebooks in school when they are online – NO EXCEPTIONS. The RINI network has specific safety measures in place to protect your students from online intrusions. This important safety net does not extend to other laptops that students may bring to school. As a result, students MAY NOT use their personal laptops and tablets in school to access online work. Students can take notes on tablets but will still need their school issued computer. Please remind your students to pack their school-approved Chromebooks and chargers each morning.

**IEPs & 504s:** If your student has an IEP, please contact Ms. Marin Kafal ([mkafal@rinimc.org](mailto:mkafal@rinimc.org)) for any IEP related questions. If your student has a 504, please contact Ms. Damaris Rosales ([drosales@rinimc.org](mailto:drosales@rinimc.org)).

**Bus Passes:** Students who need to replace their bus passes should contact Ms. Santiago ([ysantiago@rinimc.org](mailto:ysantiago@rinimc.org)).

**Seniors SAT Prep:** All seniors are required to attend SAT Prep classes on Wednesdays from 12:30PM - 2:30PM. These classes are required. Please contact Mrs. Alford ([jalford@rinimc.org](mailto:jalford@rinimc.org)) with any questions.

**PowerSchool:** RINI uses PowerSchool as our Student Information System. To know about schedules and grades, please make sure you can access it. Questions can be directed to guidance ([jfranzoni@rinimc.org](mailto:jfranzoni@rinimc.org) or [ncoetzee@rinimc.org](mailto:ncoetzee@rinimc.org)) or Mrs. Alford.



RHODE ISLAND  
NURSES INSTITUTE  
MIDDLE COLLEGE  
CHARTER SCHOOL

## Dates to Remember

- CLASS A DRESS BLUE SCRUBS DAY  
THURSDAY, SEPTEMBER 19TH
- ROSH HASHANAH, NO SCHOOL  
3-4 OCTOBER 2024
- PSAT/SAT SCHOOL DAY  
23 OCTOBER 2024

## Upcoming Events

- BLOOD DRIVE MONDAY,  
SEPTEMBER 30TH
- FREE VACCINE CLINIC  
WEDNESDAY, SEPTEMBER 25, 2024  
8 AM – 11 AM

## After School Clubs

STUDENT COUNCIL: THURSDAYS @ 3PM,  
ROOM 212

DUNGEONS AND DRAGONS: TUESDAYS @  
3PM, STARTING 17 SEPTEMBER



## Principal Updates

Welcome Back, RINI! We're two weeks into the 24-25 school year, and we're excited to have all of our students back from summer break. There have been a few huge changes: RINI now has 500 students! We have also expanded our faculty, with more teachers and support staff than before to help ensure that all of our students are able to succeed this school year.

A few important things that families and students should note: as has been shared by Support Team Leader Mrs. Ortega, RINI has a few new initiatives. We have gone phone-free, and we ask families to help support our students as we make these changes. We're asking that students keep their phones away or in the hangers in every classroom—we are confident that by removing the distraction of cellphones, our students will be better able to focus on and learn in their classes. For questions or concerns, please reach out to Mrs. Ortega ([gortega@rinimc.org](mailto:gortega@rinimc.org)) or our new Dean of Students, Mr. Medina ([ymedina@rinimc.org](mailto:ymedina@rinimc.org)). Students and families should familiarize themselves with all of our policies, which are posted on our website.

This year, we are increasing our push towards student proficiency on standardized testing, including the SAT and the NGSA. As testing continues to be a major part of the pathway to nursing programs and the nursing career, we look at these standardized tests as opportunities to get our students ready for their future careers. These tests also benefit students in that there are often scholarships that are available to students who perform well, and students who receive a cumulative 1010 or higher on the SAT will also receive the Commissioner's Seal on their diploma. Students were asked to complete 20 hours of work on iXL over the summer to help them prepare for these tests and to stay ready for their RINI coursework, and we will be continuing to use iXL throughout the school year so that we can keep providing that extra support. Additionally, seniors will be expected to attend SAT prep courses on Wednesdays from 12:30-2:30 PM. These SAT prep courses are required, and will help seniors achieve higher schools in anticipation of their application to colleges this year.

As a school community, we also have an attendance initiative in conjunction with the statewide attendance improvement goals. Over the summer, our support team visited families to provide information about school attendance and its relationship to academic success, and we will continue to remind our community about the importance of coming to school—on time, every day. The RINI school day is from 8 AM - 3 PM, and the building opens at 7:30 AM for students. At the end of this newsletter is our 24-25 school calendar. We ask that families communicate with us regarding any difficulties in school attendance, and our faculty and staff likewise will be communicating with families to help support our students' education.

We're excited to announce that, in addition to other building improvements, we have contracted a new dining services company. Students and faculty all agree—the food is good! We provide both breakfast and lunch to our students every day.

As one final update for this week, we wanted to let families know that The RI Broadcasters Association is no longer utilizing texting when there are school cancellations or messages for families. RINI has contracted a new company to send these notifications to our families. A QR code for signing up to receive these alerts is included in this newsletter.

I'm looking forward to a successful, strong school year. As always, if you have any questions, comments, or concerns, please feel free to reach out to me.



In partnership,  
Principal Ferland

"Education in the most powerful weapon which you can use to change the world."

NELSON MANDELA



# SUPPORT UPDATES

## Policy Reminders

### Phone-Free RINI

#### School Wide Expectation:

- All students will be required to place their cell phones in the designated cell phone wall hangers located in each classroom. Students can retrieve their phones at the end of each period and will need to place them back in the wall pouches at the start of their next class. The electronic device must remain in the classroom holder for the entire period.

#### Restorative Actions if technology is misused:

1. If a student is found using a cell-phone in class the Dean of Students will retrieve the cell phone and the student may pick the cellphone up at the end of school day at the Main Office.
2. If a student has multiple instances of cell phone misuse, student support will call home for a family member to pick up the cell phone. A family meeting will be set up in order to initiate additional support for the student which will include an Electronic Plan for 2 weeks, where they will be required to turn their phone into the Main Office upon arriving at school.

### Attendance Matters!

RINI opens its doors to students at 7:30AM for breakfast, and Period 1 classes start promptly at 8AM. The Rhode Island Department of Education has launched the Attendance MattersRI Campaign to encourage schools and families to work together on improving school attendance. Research shows that chronic absenteeism (missing 10% or more of the school year) can lead to lower academic achievement, disengagement, course failures, and an increased risk of dropping out.

### Dress Code

We're in the final days of summer, and that always means that the temperatures change throughout the day here in New England. As a reminder, students are NOT allowed to wear hoodies as part of their uniform. We recommend that students bring a cardigan or wear a scrub jacket. There are also coat hooks in classrooms for students to hang coats on as the weather starts to get colder.

## Parents and Guardians

### You can take advantage of our Text Messaging Service

Our school utilizes the SchoolMessenger system to deliver text messages, straight to your mobile phone with important information about events, school closings, safety alerts and more.\*

You can participate in this free service\* just by sending a text message of "Y" or "Yes" to our school's short code number, 67587.

You can also opt out of these messages at any time by simply replying to one of our messages with "Stop".


SchoolMessenger is compliant with the [Student Privacy Pledge™](#) so you can rest assured that your information is safe and will never be given or sold to anyone.



**Opt-In from  
your mobile  
now!**



**Just send "Y"  
or "Yes" to  
67587.**

 *Information on SMS text messaging and Short Codes: SMS stands for Short Message Service and is commonly referred to as a "text message". Most cell phones support this type of text messaging. Our notification provider, SchoolMessenger, uses a true SMS protocol developed by the telecommunications industry specifically for mass text messaging, referred to as "short code" texting. This method is fast, secure and highly reliable because it is strictly regulated by the wireless carriers and only allows access to approved providers.*

*If you've ever sent a text vote for a TV show to a number like 46999, you have used short code texting.*

\*Terms and Conditions: Message frequency varies. Standard message and data rates may apply. Reply HELP for help. Text STOP to cancel. Mobile carriers are not liable for delayed or undelivered messages. See [schoolmessenger.com/tm](http://schoolmessenger.com/tm) for more info.

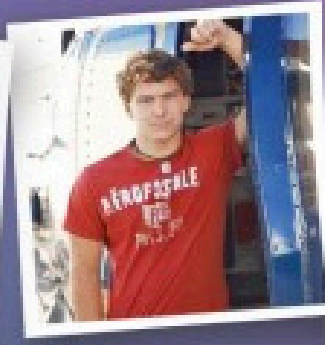
# Vaccines Save Lives



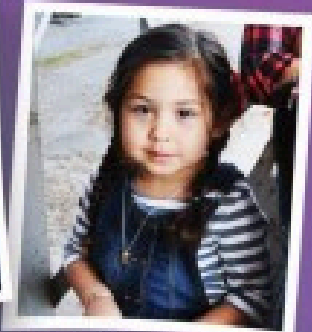
**Kaden Stevenson,**  
double-amputee due  
to flu complications



**Noel Smith,**  
lost to flu, 1 year old



**Luke Duvall,**  
hospitalized 30 days  
due to flu



**Amiah Houseman,**  
lost to flu, 4 years old

To read the stories of families impacted by flu, visit  
[www.familiesfightingflu.org/family-stories](http://www.familiesfightingflu.org/family-stories)



**FAMILIES**  
FIGHTING FLU.

## FREE VACCINE CLINIC

**Wednesday, September 25, 2024**  
**8 AM – 11 AM**

**RI Nurses Institute**  
150 Washington Street  
Providence, RI 02903  
In the CNA Lab

**For: Students, Staff/Faculty and Family Members**

### Offering:

- Flu Shot
- FluMist
- COVID-19 vaccine

Have insurance?  
Please bring your insurance card.

No insurance?  
No problem! No out-of-pocket cost for anyone.



To register for this clinic or find other clinics in your area:

- 1 Scan QR code or visit [www.schoolflu.com](http://www.schoolflu.com)
- 2 Enter login ID to register: **rinurses**

Registration is highly recommended. Limited walk-ins are available.



Hablamos español | Falamos português

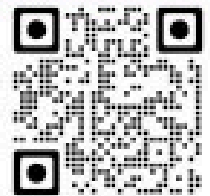
For questions about online registration or help in other languages, call 401-222-5960 / RI Relay 711

G20220

# FREE DENTAL CLINIC

Oct 5-6, 2024 | RIMOM.org

335R Prairie Ave | Providence Community Health Centers



## RI Mission of Mercy Free Dental Clinic

Line opens 5:45 AM  
First Come, First Served  
No Early Arrivals

### SERVICES PROVIDED AT CLINIC

- Cleanings
- X-Rays
- Fillings
- Root canal treatment on front teeth only
- Tooth extractions
- Oral health instructions
- Partial dentures

#### PLEASE NOTE:

- There's no childcare supervision at RIMOM.
- Children from 12 to 18 years old MUST be accompanied by a parent/guardian.
- No services provided for children under 12.

### SERVICES NOT (X) PROVIDED

- X Root canals on back (molar) teeth
- X Extractions of impacted wisdom teeth
- X Full dentures
- X Small denture repairs
- X Caps (crowns)
- X Tooth whitening

### PREMIER SPONSORS 2024



PATIENTS ARE SEEN UNTIL THE CLINIC REACHES CAPACITY



# RINI Middle College

## 2024 - 2025 School Calendar

August 2024						
Su	M	Tu	W	Th	F	S
				1	2	3
4	5	6	7	8	9	10
11	12	13	14	15	16	17
18	19	20	21	22	23	24
25	26	27	28	29	30	31
						(0)

September 2024						
Su	M	Tu	W	Th	F	S
1	2	3	4	5	6	7
8	9	10	11	12	13	14
15	16	17	18	19	20	21
22	23	24	25	26	27	28
29	30					
						(19)

October 2024						
Su	M	Tu	W	Th	F	S
		1	2	3	4	5
6	7	8	9	10	11	12
13	14	15	16	17	18	19
20	21	22	23	24	25	26
27	28	29	30	31		(20)

November 2024						
Su	M	Tu	W	Th	F	S
					1	2
3	4	5	6	7	8	9
10	11	12	13	14	15	16
17	18	19	20	21	22	23
24	25	26	27	28	29	30
						(14)

December 2024						
Su	M	Tu	W	Th	F	S
1	2	3	4	5	6	7
8	9	10	11	12	13	14
15	16	17	18	19	20	21
22	23	24	25	26	27	28
29	30	31				
						(15)

January 2025						
Su	M	Tu	W	Th	F	S
			1	2	3	4
5	6	7	8	9	10	11
12	13	14	15	16	17	18
19	20	21	22	23	24	25
26	27	28	29	30	31	
						(21)

February 2025						
Su	M	Tu	W	Th	F	S
						1
2	3	4	5	6	7	8
9	10	11	12	13	14	15
16	17	18	19	20	21	22
23	24	25	26	27	28	
						(15)

March 2025						
Su	M	Tu	W	Th	F	S
						1
2	3	4	5	6	7	8
9	10	11	12	13	14	15
16	17	18	19	20	21	22
23	24	25	26	27	28	29
30	31					(20)

April 2025						
Su	M	Tu	W	Th	F	S
		1	2	3	4	5
6	7	8	9	10	11	12
13	14	15	16	17	18	19
20	21	22	23	24	25	26
27	28	29	30			
						(17)

May 2025						
Su	M	Tu	W	Th	F	S
				1	2	3
4	5	6	7	8	9	10
11	12	13	14	15	16	17
18	19	20	21	22	23	24
25	26	27	28	29	30	31
						(21)

June 2025						
Su	M	Tu	W	Th	F	S
1	2	3	4	5	6	7
8	9	10	11	12	13	14
15	16	17	18	19	20	21
22	23	24	25	26	27	28
29	30					
						(14)

July 2025						
Su	M	Tu	W	Th	F	S
		1	2	3	4	5
6	7	8	9	10	11	12
13	14	15	16	17	18	19
20	21	22	23	24	25	26
27	28	29	30	31		

AUGUST	DECEMBER	APRIL
21 - 23 - New Teacher orientation	23 - 31 - Holiday Recess (No School)	14 - 18 - Spring Recess (no school)
26 - 29 - Teacher orientation		
	JANUARY	
SEPTEMBER	1 - New Year's Day (no school)	MAY
2 - Labor Day (no school)	13 - End of Semester 1	1 - Sr. Decision Day
3 - First Day of School	14 - 17 - Exams	21 - Senior Presentation Day Early dismissal at 12:00
10 - State Primary Day	20 - Dr. Martin Luther King Jr. Day (no school)	26 - Memorial Day (no school)
	21 - Semester 2 begins	
OCTOBER	FEBRUARY	June
3-4 Rosh Hashanah	17 - Winter Recess (no school)	2-3-4 Senior Exams
14 - Indigenous People's Day (no school)		7 - Jr/Sr Prom (tentative)
		11 - Cap and gown distribution
NOVEMBER	MARCH	12 - Senior Awards Night (tentative)
5 - Election Day (no school) Teacher PD Day 8 - 3	31 - Eid al-Fitr (no school)	16 - Graduation (tentative)
11 - Veteran's Day (no school)		18 - 20 - 23 - Underclassmen Exams
27 - 28 - 29 - Thanksgiving Recess		19 - Juneteenth (no school)
		24 - exam make up/last day of school